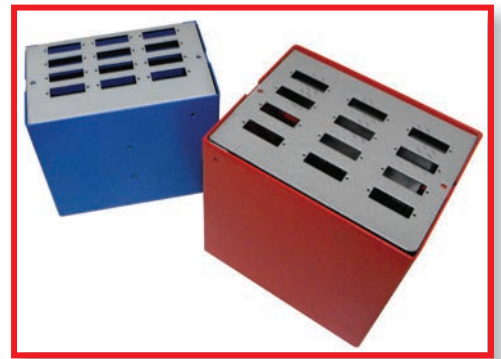




Pronounced SKIPPER

# ENGINEERED ENCLOSURES<sup>TM</sup>



- Specialist design and fabrication of metal enclosures
- Cable and reticulation management products
- General fabrication in mild steel and stainless steel to client specification
- Service Centre offering CNC punching, bending, welding, powder coating and tube bending

# ENCLOSURES

SCHIPPER manufactures metal enclosures in mild steel, 3CR12, stainless steel and aluminium. The range consists of:

- Multi-Purpose Enclosures
- Floor Standing Enclosures
- Modular Floor Standing Enclosures
- Computer Cabinets
- Consoles and Desks
- Multi-Purpose Boxes

## Multi-Purpose

SCHIPPER Multi-Purpose Enclosures are made to client-specified size, configuration and colour. They have chassis plates, gland plates, wall mounting plates and pole mounting kits.



## Floor Standing

SCHIPPER Floor Standing Enclosures are fitted with movable chassis plate supports, reinforced front doors, double bar locking system and two-part cable gland plates.



## Modular

SCHIPPER Modular (Purpose-Made) Floor Standing Enclosures comprise four multiple-folded steel uprights attached to top and bottom frames punched on a 25mm pitch to accept accessories. Roof, back and side panels are fixed to the frames by screws. Doors are fitted to a reinforced frame for easy attachment. Accessories are available for the fitting of 19 inch racks, chassis plates and internal doors.



## Computer Cabinets

SCHIPPER Computer Cabinets and Server Enclosures are specially designed to protect computers and servers in harsh industrial environments.



## Consoles

SCHIPPER Consoles and Control Desks are designed for ease of access for day-to-day operation and servicing. CONTROL DESKS are designed for total accessibility. CONSOLE applications are varied, but all are designed for the fitting of a PC, monitor and keyboard.



## Multi-Purpose Boxes

SCHIPPER Multi-Purpose Boxes include Terminal Boxes, Bus Enclosures, Fibre Optic Distribution Boxes or for other uses where equipment requires protection.



## CABLE MANAGEMENT

The SCHIPPER range of cable and reticulation management items includes Cable Trays (punched metal in straight lengths, horizontal bends, external bends, internal bends, 4-way joiners, tees and splicing sets). Available in light duty, medium duty and heavy duty. Also, Cable Ladders (straight, 4-way joiners, crossovers, tees, horizontal bends, external bends, internal bends and splices).



## GENERAL FABRICATION

If there's one thing we've learned in our 60 years, it's flexibility. And, nowhere is this more true than in our General Fabrication Division. If it can be made of light metal, we can probably make it for you. Our strongest asset is undoubtedly our SCHIPPER team ... equipped by years of experience and thousands of different jobs to welcome client requests not as problematic but as interesting challenges.

So, although we're proud of our CAD facilities and other cutting-edge niceties, don't be surprised if we pull out a note pad or any other item to hand and start sketching. Sit back, relax and enjoy the transition from something you wanted to a solution you truly need. Then enjoy again when your finished product is delivered on time and exactly as conceived.

Could be that's why you'll turn to us again and again.



## SERVICE CENTRE

We'd like you to think of the SCHIPPER Service Centre as your own factory ... but without the headaches of assets, maintenance, sick leave and other stuff sent to test us. You have an idea for a piece of equipment that could be fabricated from mild steel, stainless steel or aluminium. You may be able to produce part or all of it yourself, but might not be willing to handle the entire job because of lack of specialist equipment or time.

That's where SCHIPPER Service Division comes in. Fully automated CNC punching, bending it any way you want, welding in many formats and, if you like, finishing off with attractive, durable and protective powder coating.

We're a touch different at SCHIPPER. We believe that if you call yourself a Service Centre, 'service' is key. Providing good service is no problem ... it is our pleasure. Again and again.







To mark our 60th year in business, we have changed the 'C' in our name to blue.  
A constant reminder of our pledge of Caring for Client and Craft.

#### BACKGROUND

Founded in 1953, Cape Town based SCHIPPER has a reputation of Caring for Client needs and the Craft of metal product manufacturing. Relying not just on the latest production equipment, the ethos of SCHIPPER has been to offer hands-on service by a team of highly experienced and multi-talented persons. Offering three distinct services, General Fabrication, Service Centre (cutting, punching, forming and tube

bending) and product specific Enclosure Fabrication, SCHIPPER has become best known in its 60 years of growth as a highly reputable designer and fabricator of a wide range of metal Enclosures ... from electrical, outdoor, distribution network, server and modular to consoles, boxes (break-out, splicing, etc.) and cable ducting (trays, ladders, etc.) ... for a growing circle of discerning local and international clients.

## ENGINEERED ENCLOSURES<sup>TM</sup>

2 Leopard Street Paarden Eiland Cape Town 7420

P O Box 215 Paarden Eiland Cape Town 7420

T +27 (0)21 511 0280 F +27 (0)21 511 0256

geoff@schippersteel.co.za www.schippersteel.co.za

